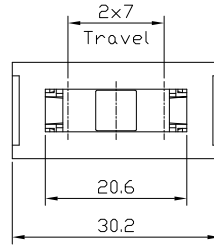
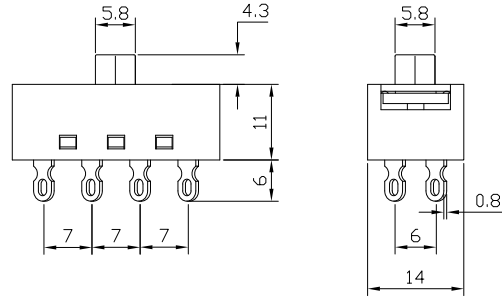


Since 1995, we focus on switches

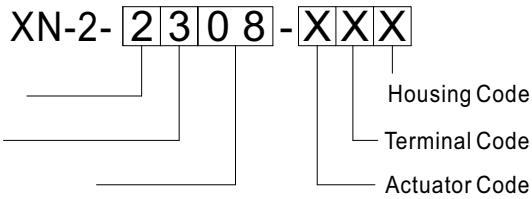
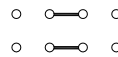


XN-2-2308-EA1

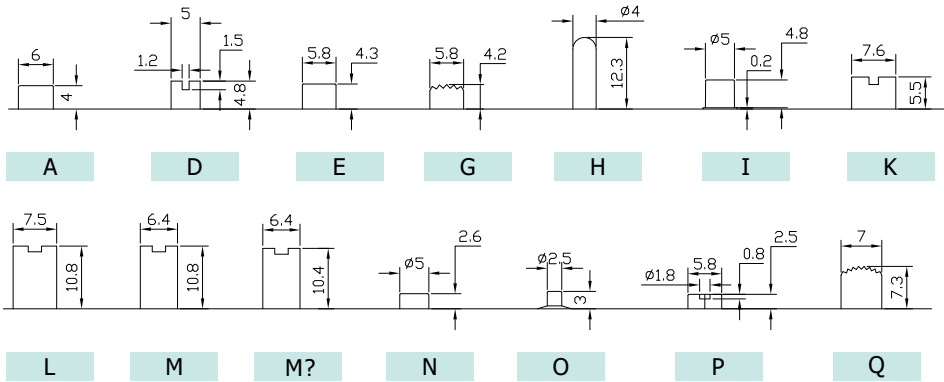
- Single/Double Pole; Single/Double Throw
- Ratings:
16A 125VAC; 10A 250VAC; UL
8A 250VAC; TUV, VDE, CQC
- Features:
Knob, Terminal & Casing Options see
selections guide



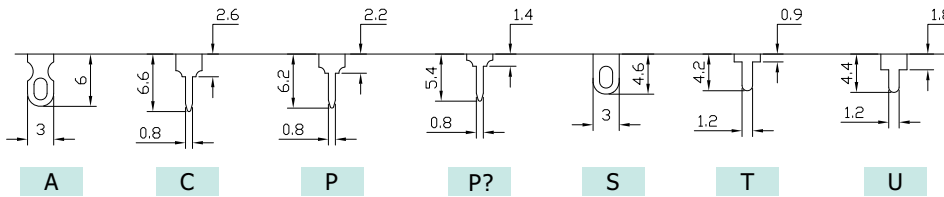
Circuit Diagram



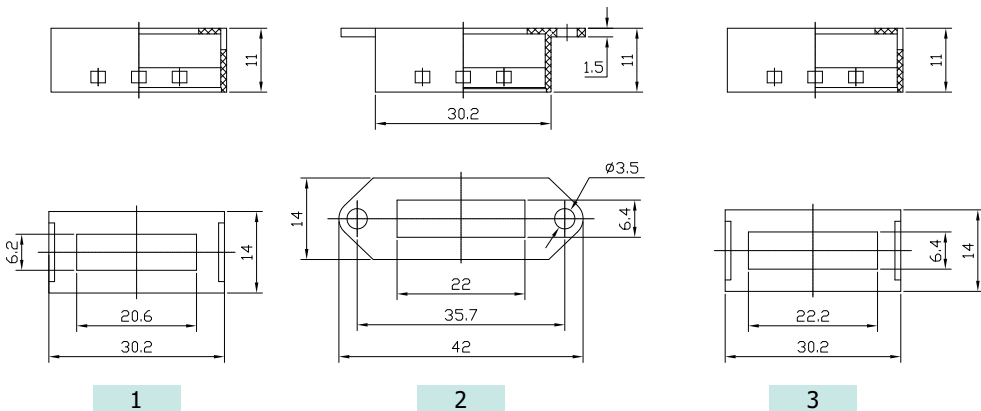
Actuator Options



Terminal Options



Housing Options



To provide a safe and reliable on-off service, let electric appliances more perfect