

Since 1995, we focus on switches

## PS4型電源開關系列 Power switch series

### ◆ 特點和用途 Characteristics and usage

- 具有快速動作的特點

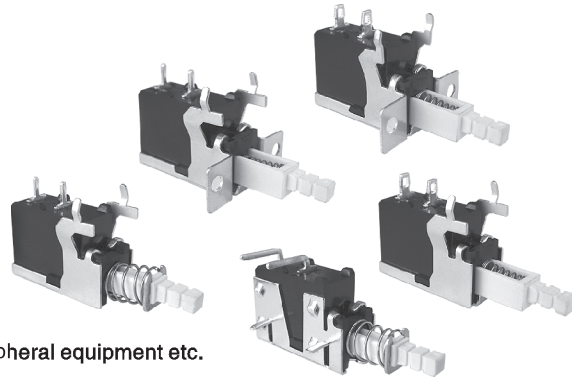
Quick action

- 可承受大電流和浪涌電流

Endure big current and inrush current

- 廣泛應用於電視機、音頻裝置、計算機及外圍設備等。

Widely used in color TV, audio device, computer and its peripheral equipment etc.



### ◆ 技術特性 Specifications

項目 Item		特性值 Value
環境溫度 Environment temperature		-10 ~ +85°C ; 0 ~ 125°C
相對濕度 Relative humidity		95%, 40°C
額定值 Ratings		TV-5 125VAC, 10GPA125/250VAC, 10A125/250VAC 8A/128A250VAC
工作行程/全行程 Operating travel/full travel		2.5mm/3.5mm
動作力 Operating force		2 ~ 6N
電路 Circuit		單刀單擲 SPST
絕緣電阻 Insulation resistance		≥ 100MΩ
接觸電阻 Contact resistance		≤ 50mΩ
耐電壓 Test voltage	同極不相接端子間 Between each terminals of the same polarity	AC2000V
	帶電金屬零件與地(外殼)之間、接綫端與不帶電金屬件之間 Between current-carrying metal parts and ground(case), and between each terminal and non-current-carrying metal parts.	AC4000V
電氣壽命 Electrical life		10,000次/cycles
質量 Weight		約 7.8 g Approx. 7.8g
安全認證 Safety approvals		UL, CUL, VDE, ENEC, TUV, SEMKO, DEMKO, NEMKO, FIMKO, CE, EK, CQC

微動開關系列  
MICRO SWITCH SERIES

KW3A

KW4A

KW4A(S)

KW10

MS1

MS2

MS3

MS5

MS10

防水開關系列  
WATERPROOF SWITCH SERIES

WS1

WS1L

WS2

WS3

WS4

WS5

WS6

WS7

電源開關系列  
POWER SWITCH SERIES

KDC-A11

KDC-A04

PS4

PS5

PS6

RS1

RS2

RS3

其他開關系列  
OTHER SWITCH SERIES

SP02

KXZ2

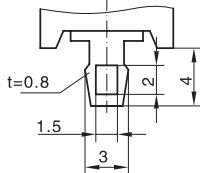
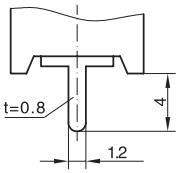
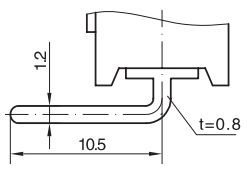
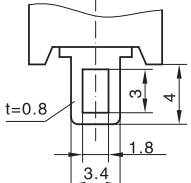
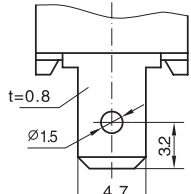
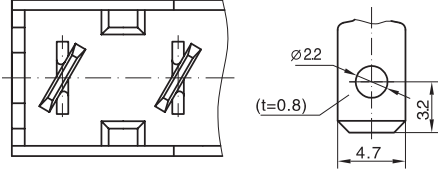
PRS1

**◆ 型號規格命名及含義 Model number legend and meanings**

 PS4- □ □ □ □ □  
           1 2 3 4 5

<b>1</b> 外形特徵 Outline features	A: 外彈簧形 Out side spring B: 內彈簧形 Inside spring (見說明圖 see illustration)	<b>4</b> 蓋板形狀特徵 Frame tab shape features	0: 無支腳 No frame tab 1: 支腳尺寸2.6 Frame tab dimension 2.6 2: 支腳尺寸5 Frame tab dimension 5 3: 支腳尺寸6.8 Frame tab dimension 6.8 4: 右側臥 Right lain 5: 左側臥 Left lain
<b>2</b> 端子類型 Terminal types	1: 焊接端子(孔1.5×2) Solder terminal(hole 1.5×2) 2: PCB端子 PCB terminal 4: 側面PCB端子 Side PCB terminal 5: 焊接端子(孔1.8×3) Solder terminal(hole 1.8×3) 6: 快接端子#187 Quick-connect terminal#187 7: 快接端子#187, 扭轉45° Quick-connect terminal#187, torsion 45° (見說明圖 see illustration)	<b>5</b> 附加代號 Additional code	用A、B、C……表示與基本型有 差異或有特殊要求(如無鎖開關 用W表示) A,B,C……indicate different or special requirements with basic type(if not lockswitch indicate with W)
<b>3</b> 安裝孔類型 Mounting hole types	0: 無安裝孔 No mounting hole 1: 螺孔M3 Screw hole M3 2: 光孔Φ3.2 Hole Φ3.2		

**◆ 接線端尺寸 Terminal dimensions**

端子種類 Terminal types	<b>1</b>	<b>2</b>	<b>4</b>
端子尺寸 Terminal dimensions			
端子種類 Terminal types	<b>5</b>	<b>6</b>	<b>7</b>
端子尺寸 Terminal dimensions			

◆ 外形特徵圖 Outline characteristic drawing

外形特徵A Outline characteristic/A	外形特徵B Outline characteristic/B

◆ 蓋板特徵圖 Frame tab characteristic drawing

蓋板特徵號 Frame tab characteristic code	0	1	2
蓋板特徵 Frame tab characteristic			
蓋板特徵號 Frame tab characteristic code	3	5	
蓋板特徵 Frame tab characteristic			

微動開關系列  
MICRO SWITCH SERIES

KW3A

KW4A

KW4A(S)

KW10

MS1

MS2

MS3

MS5

MS10

防水開關系列  
WATERPROOF SWITCH SERIES

WS1

WS1L

WS2

WS3

WS4

WS5

WS6

WS7

電源開關系列  
POWER SWITCH SERIES

KDC-A11

KDC-A04

PS4

PS5

PS6

RS1

RS2

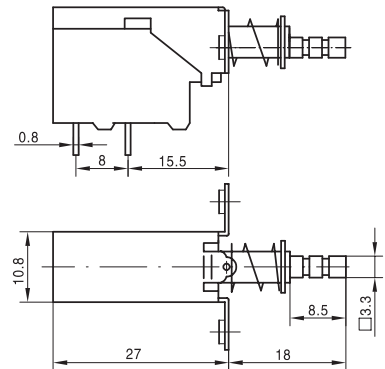
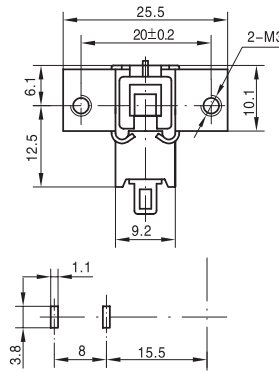
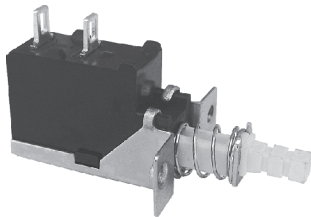
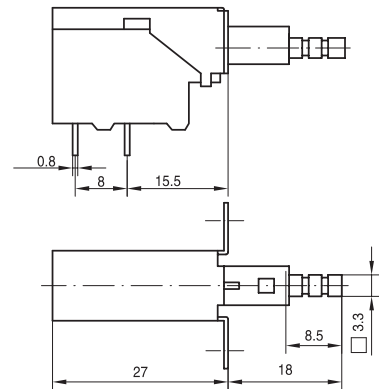
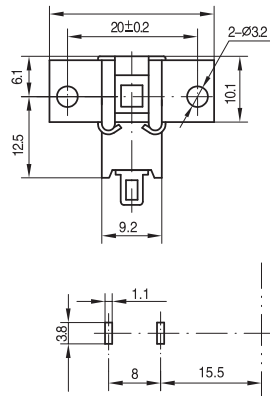
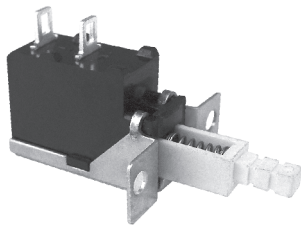
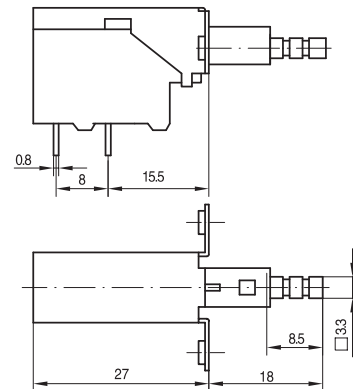
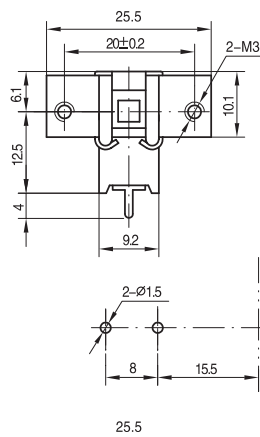
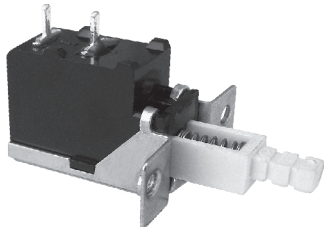
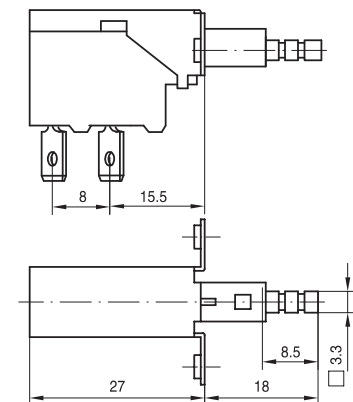
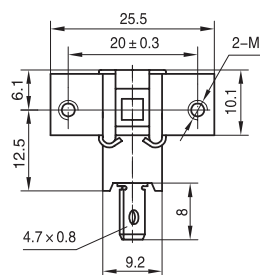
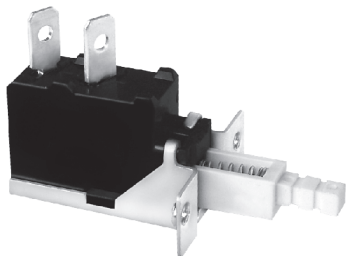
RS3

其他開關系列  
OTHER SWITCH SERIES

SP02

KXZ2

PRS1

**◆ 外形和安裝尺寸 Outline and mounting dimensions**
**PS4-A510**

**PS4-B520**

**PS4-B210**

**PS4-B710**


微動開關系列 MICRO SWITCH SERIES
KW3A
KW4A
KW4A(S)
KW10
MS1
MS2
MS3
MS5
MS10

防水開關系列 WATERPROOF SWITCH SERIES
WS1
WS1L
WS2
WS3
WS4
WS5
WS6
WS7

電源開關系列 POWER SWITCH SERIES
KDC-A11
KDC-A04
PS4
PS5
PS6
RS1
RS2
RS3
其他開關系列 OTHER SWITCH SERIES
SP02
KXZ2
PRS1